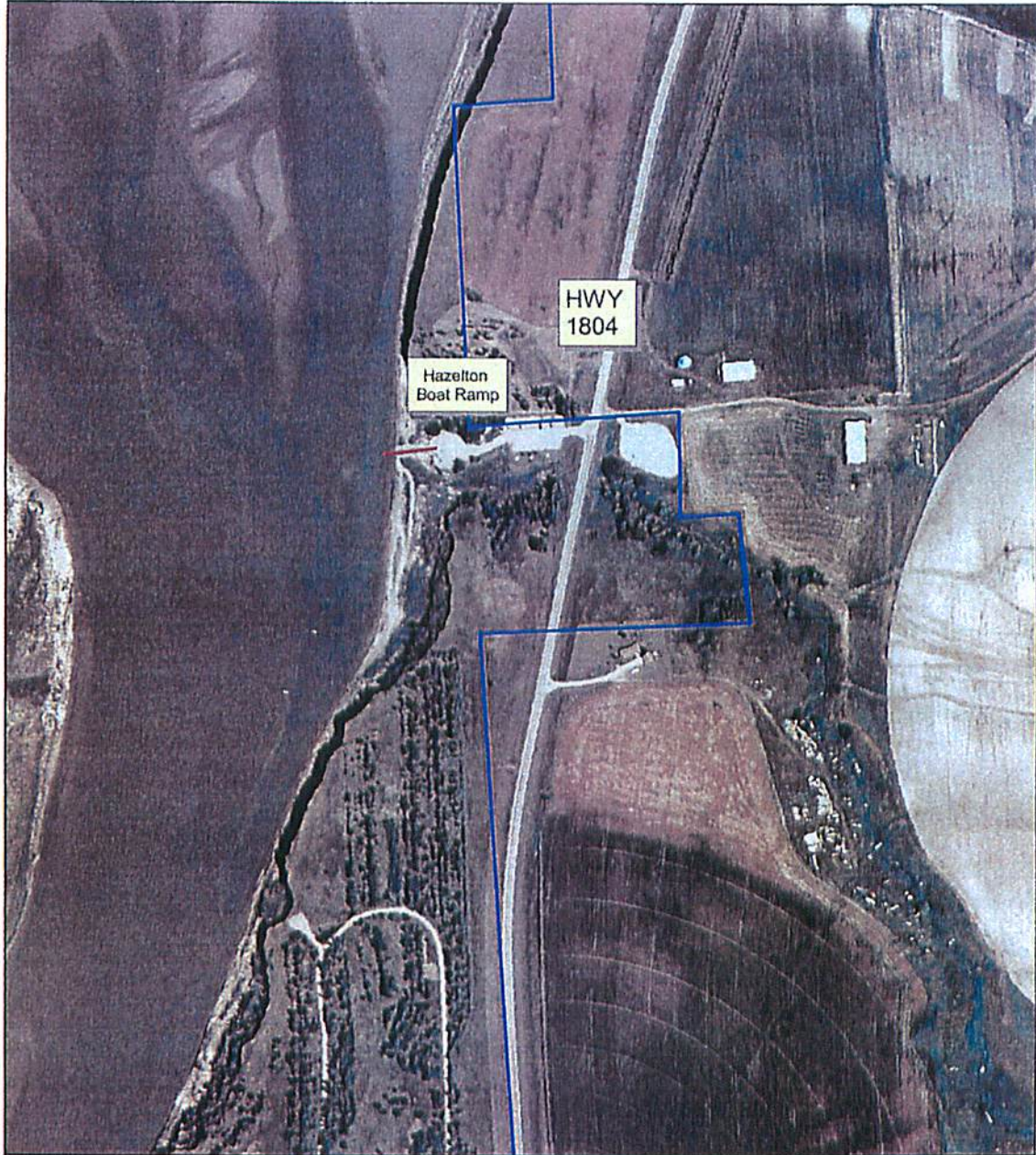




US Army Corps  
of Engineers.

# GUIDANCE NOTIFICATION LETTER

U.S. ARMY CORPS OF ENGINEERS  
OMAHA DISTRICT  
OAHE PROJECT OFFICE



Legend

- Hazelton Trail
- Corps Boundary



**Proposed Shoreline Access**  
Hazelton Boat Ramp

0.07 0 0.07 0.14 Miles

Disclaimer: The United States Government (USGCE) provides this data and the related analysis and maps as both the source and the recipient of the Government makes no warranty, expressed or implied, regarding the accuracy, completeness, timeliness, usability, or suitability for any particular purpose of the information and data furnished. The United States shall not be liable, whatsoever, in any action for damages, direct or indirect, arising from the use of this information. Data developed in this project are approximate numbers that, if used, should not be used in place of survey data or legal land descriptions.

OAHE GIS CEMPO-00-0A	
Produced By:	 <b>US Army Corps of Engineers</b> Omaha District
Writer:	
Prepared on Date:	
23 Feb 07	
Reviewed By:	
Approval Date:	
File Location:	
f:\omaha_co_7_5ev06.spr	