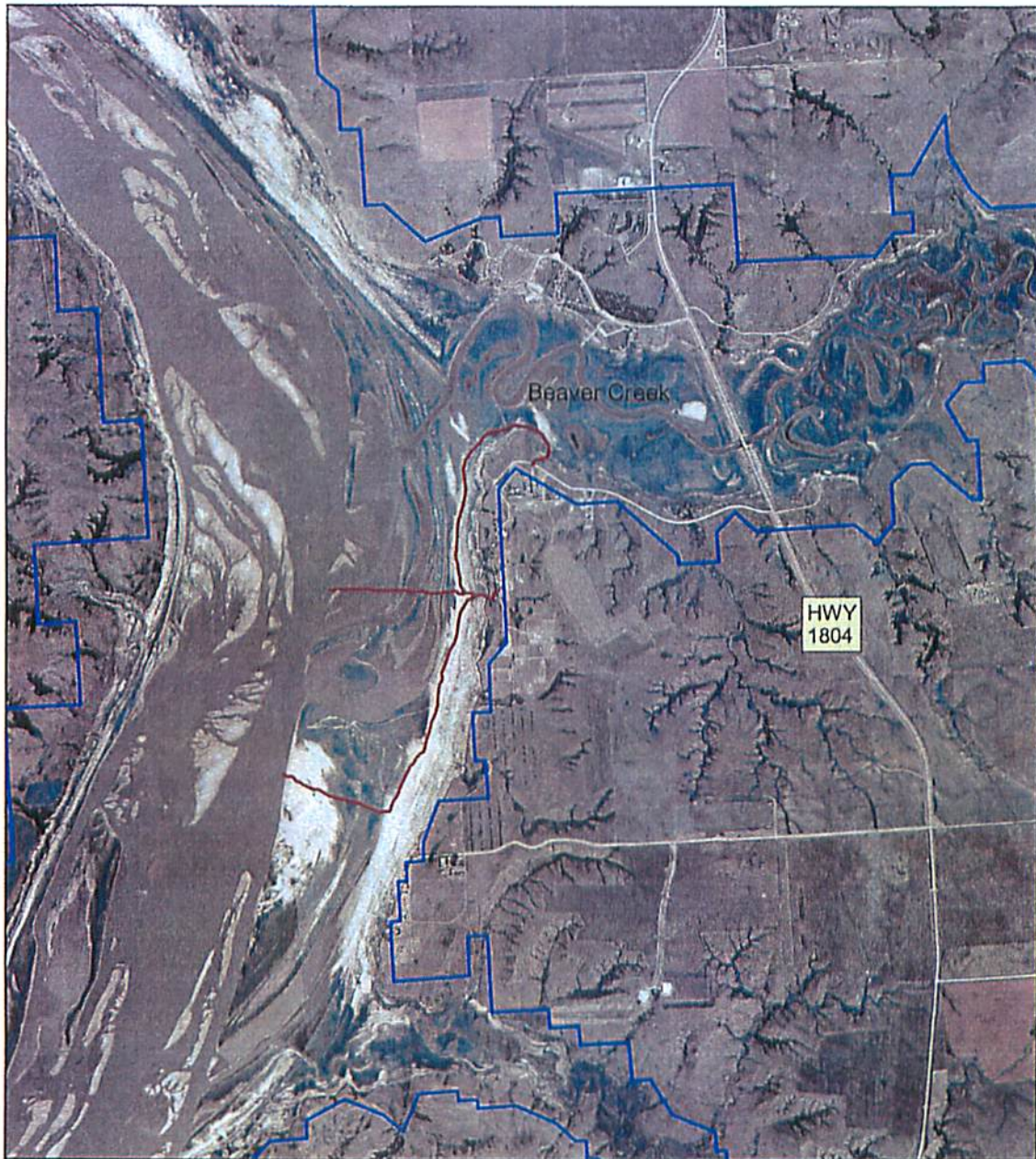




US Army Corps
of Engineers.

GUIDANCE NOTIFICATION LETTER

U.S. ARMY CORPS OF ENGINEERS
OMAHA DISTRICT
OAHE PROJECT OFFICE



Legend


- Corps Boundary
- Beaver Creek Trail

Proposed Shoreline Access Beaver Creek South



0.4 0 0.4 0.8 Miles

Disclaimer: The United States Government and USACE assumes that data and the content herein are correct to the extent understanding that the Government will not be responsible, in whole or in part, concerning the accuracy, completeness, reliability, usability, or timeliness of any particular instance of the information and data provided. The United States shall be liable in damages only for claims resulting from errors or omissions in this data made pursuant to this notice and appropriate federal laws and shall not be liable in damages for any other claims.

OAHE GIS DENVO-GO-GA	
Prepared by: PTW/ML	 US Army Corps of Engineers Omaha District
Project Name: 23 Feb 07	
Project ID:	
Revision Date:	
File Name: Formwork_m_1_Rev06.apr	